



ANIMETS
ENGG. PVT. LTD.

ANIMETS ENGINEERING PVT. LTD.

Excellence with pride

ONE STOP SOLUTION for Machine Spares Supply

- SHAFTS |**
- SPINDLE |**
- GEARS |**
- FLANGES |**
- LOCATORS |**
- HOUSINGS |**
- BEARING HOUSINGS |**
- COVERS |**
- DRONE SPARES |**

www.animetsengg.com

WHO WE ARE

We manufacture precision Machined Components and Machine Spares because we understand what precision means to our clients. Therefore we go to any length to ensure that our Machined Components and Machine Spares are of the highest accuracy & quality.

The complete service range we offer includes Manufacturing of Precision Machined Components, Machine Spares, and Industrial Furnace Spares & Crane Spares.



VISION

To become a one stop solution for Machine Spares supply across the globe.

MISSION

To create value for the stakeholders through customer satisfaction, efficient use of resources, achieving sustainable growth, following environmental and safety norms.

COMPANY **OVERVIEW**



Animets was incorporated in March 2018. We had a proprietorship firm since 2005. We have been in business for more than 20 years.

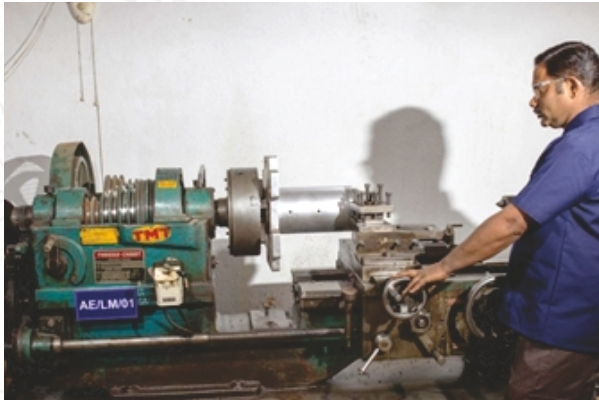
Animets is one of the Leading service providers. We manufacture precision Machined Components and Machine Spares because we understand what precision means to our clients. Therefore we go to any length to ensure that our Machined Components and Machine Spares are of the highest accuracy & quality.

The complete service range we offer includes Manufacturing of Precision Machined Components, Machine Spares, and Industrial Furnace Spares & Crane Spares. Apart from this, we also offer Machining of raw material on Labour Charges basis. **Animets Engineering Pvt. Ltd.** has many achievements like, starting exporting the material right from its inception. Having experience of 11 years to serve (including our previous venture) in different countries UK, USA, etc.

Our professionals use advanced machinery & systems in the manufacturing of these products & Services. The products are highly appreciated among clients for their high durability, longer service life, and dimensional accuracy & productivity, etc. Further, we offer our product range in various specifications and can be customized as per the specific requirements of our clients at reasonable price range.



MCC SETUP

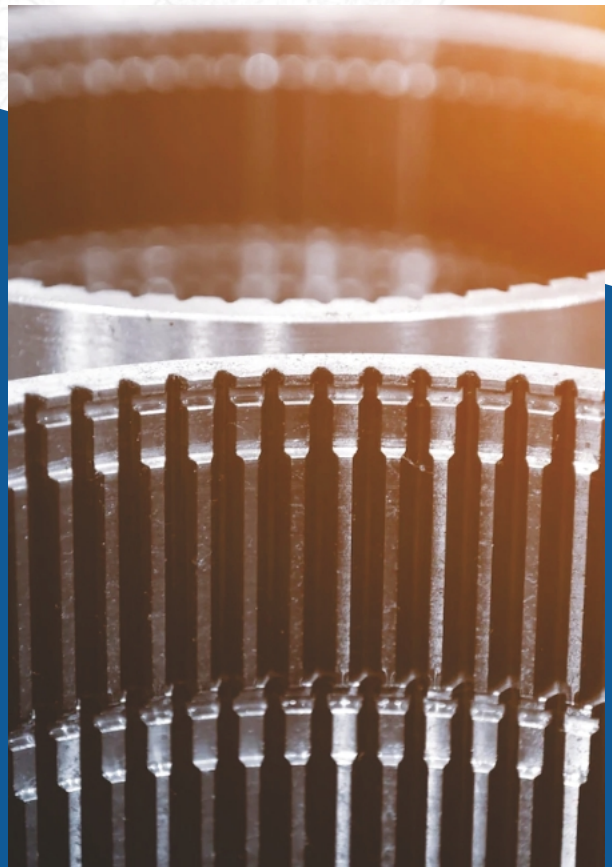


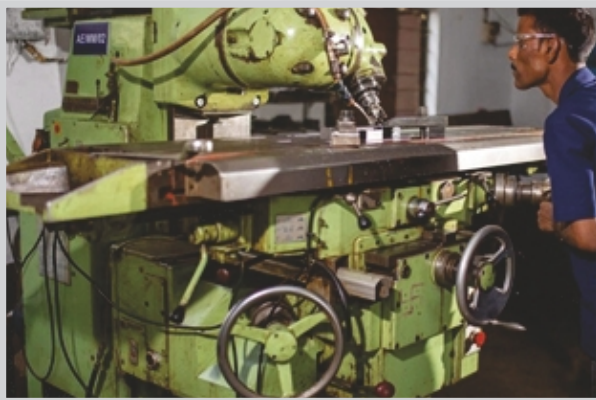
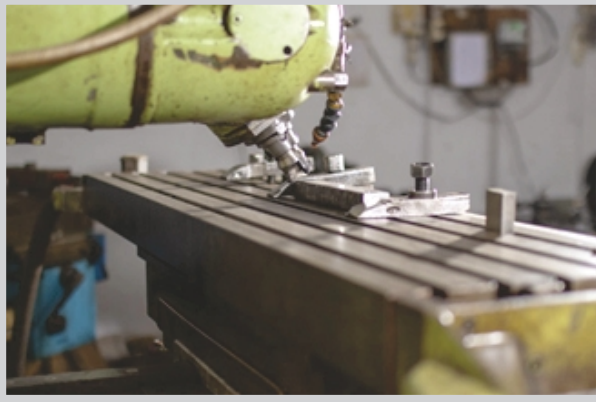
Area Setup & Power:

Shed: 3000 sq. ft. | **Power:** 60 HP

Machines:

- Lathe Machine – 7 ft TMT Make
- Lathe Machine – 4 ft TMT Make
- Universal Milling Machine M2 Micron Make
- Universal Milling Machine Dufour Make with DRO
- MITR 4S Micromill Make
- Radial Drilling Machine Sigma Make
- Pillar type Drilling Machine Prakash Make
- Welding Transformer 400A, 2Ø
- VMC Yam Make 700X x 460Y x 500Z with ATC
- Co2 Welding Machine 400A





OUR PRODUCTS



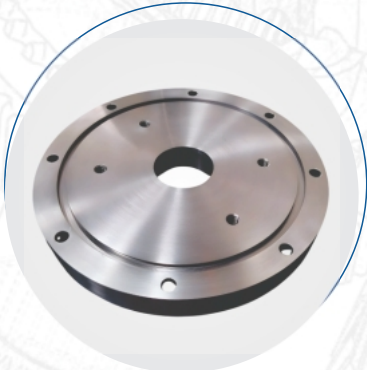
**Adaptor
SS316**



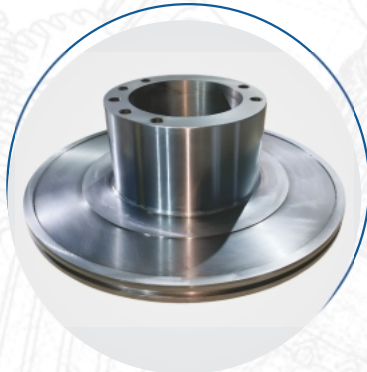
**Seal Housing
Brass CZ121**



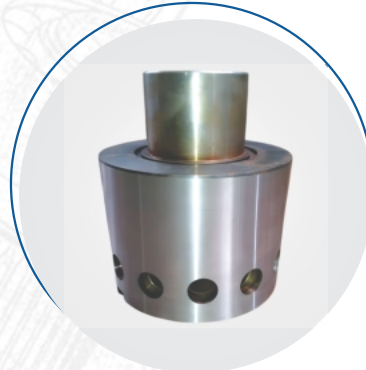
**Pyrometer Guide Bush
Phosphor Bronze**



**Top
Plate**



**Air Cylinder
Piston**



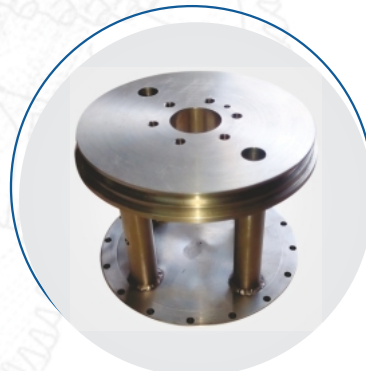
**Stub
Clamp**



**Male Connector
Brass**



**Special Stud
SS304**



**Pyrometer Stand
SS304**

OUR PRODUCTS



**Male Connector 3/4"
NPT, SS304**



**Roller
Al HE30**



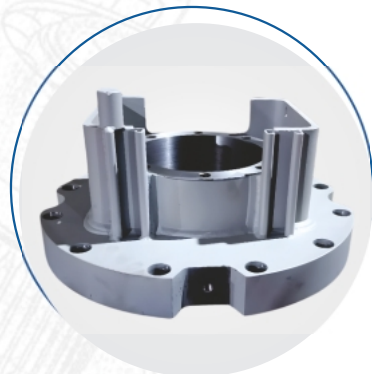
**Bearing Bush
Leaded Bronze LB4C**



**BSP Male
Nipple**



**Bearing
Hub**



**Cyl MTG
Top Plate**



**Locating Pin
SS304**



**Pyrometer Port
Carbon Steel**



**Link, EN24
Nitrided**

OUR CLIENTS



**ANIMETS ENGG
PRIVATE LIMITED**

Gat No. 271/1, Pune-Nashik Highway, Nanekarwadi, Chakan, Tal. Khed, Dist. Pune, 410501, MH, India.

T: +91 98232 30165 / 98907 60165 | E: sales@animetsengg.com, animetsoffice@gmail.com

W: www.animetsengg.com

CIN: U29220PN2018PTC175315 | PAN: AAQCA6290F | IEC: AAQCA6290F | GSTIN: 27AAQCA6290F1ZC